

TWP

**THISTLE WIND
PARTNERS**



Notice to Mariners

Bowdun E3

22/03/24

Online Jule

Overview

Calibration Test - Update

Please be advised that MV Ondine Jule, on behalf of Thistle Wind Partners (TWP), will be undertaking a geophysical survey of the proposed Bowdun (E3) Offshore Wind Farm Export Cable Corridor in the coming weeks. Prior to the survey being undertaken the survey vessel will be required to undertake calibration tests of its survey equipment. The purpose of this Notice to Mariners (NtM) is to outline the working area required for the survey vessel to undertake the calibration. The pre-survey calibration test will utilise the MV Ondine Jule (offshore vessel).

Schedule of Operations

Survey Dates:	22/03/24 - 29/03/24
Operation:	Calibration Test
Vessel:	Ondine Jule

Survey Description

The MV Ondine Jule will be conducting pre survey calibration tests. During the tests the Ondine Jule will be deposit calibration equipment on the seabed prior to carrying out test survey lines over the top of the in-site calibration equipment, operating at approximately 4 knots with equipment being towed at a distance of up to 300 m astern of the vessel. The vessels calibration will take up to 48hrs to complete, however, additional time has been acknowledged to accommodate weather and operational delays.

Please refer to Table 1 and Figure 1 for further information on the location of the calibration test.

General Safety Advice

The MV Ondine Jule will be restricted in their ability to maneuver and will display the appropriate lights and shapes prescribed by the International Regulations for Preventing Collisions at Sea. Other vessels are requested to provide a minimum clearance of 500m from the survey vessel during marine operations and pass at a safe speed. Regular Security Messages will be issued on VHF Channel 16 and this Channel will be always monitored by the vessel. The vessel will also transmit regular Automatic Transmission Identification System (AIS) Messages.

Vessel Details

The vessel that will carry out the survey activities is shown below.



Figure 1: MV Ondine Jule Survey Vessel

Contacts

Ondine Jule

CALL SIGN	EIZH4
------------------	--------------

BRIDGE TEL	+35 383 2089 762
-------------------	-------------------------

ONSHORE CONTACT NUMBER	+ 35 387 7623 025
-------------------------------	--------------------------

ONSHORE SITE MANAGER	cian@ondine-survey.com
-----------------------------	-------------------------------

FISHING LIASON OFFICERS (FLOs)

BLACKHALL & POWIS

TOMMY FINN	07787 503119
-------------------	---------------------

tommy.finn@blackhallpowis.com

MICHAEL SUTHERLAND	07928 484343
---------------------------	---------------------

michael.sutherland@blackhallpowis.com
--

MAIN OFFICE

Blackhall & Powis

Suite 11

The Garment Factory

10 Montrose Street

Glasgow

G1 1RE

Area of Operations

Table 1: Tabulated Coordinates of Area of Operations – Above Chart refers.

POINT	Easting	Northing	Longitude	Latitude
1	544860	6297795	2 ° 15.901' W	56 ° 49.310' N
2	544860	6295943	2 ° 15.921' W	56 ° 48.312' N
3	546712	6295943	2 ° 14.101' W	56 ° 48.301' N
4	546712	6297795	2 ° 14.081' W	56 ° 49.299' N

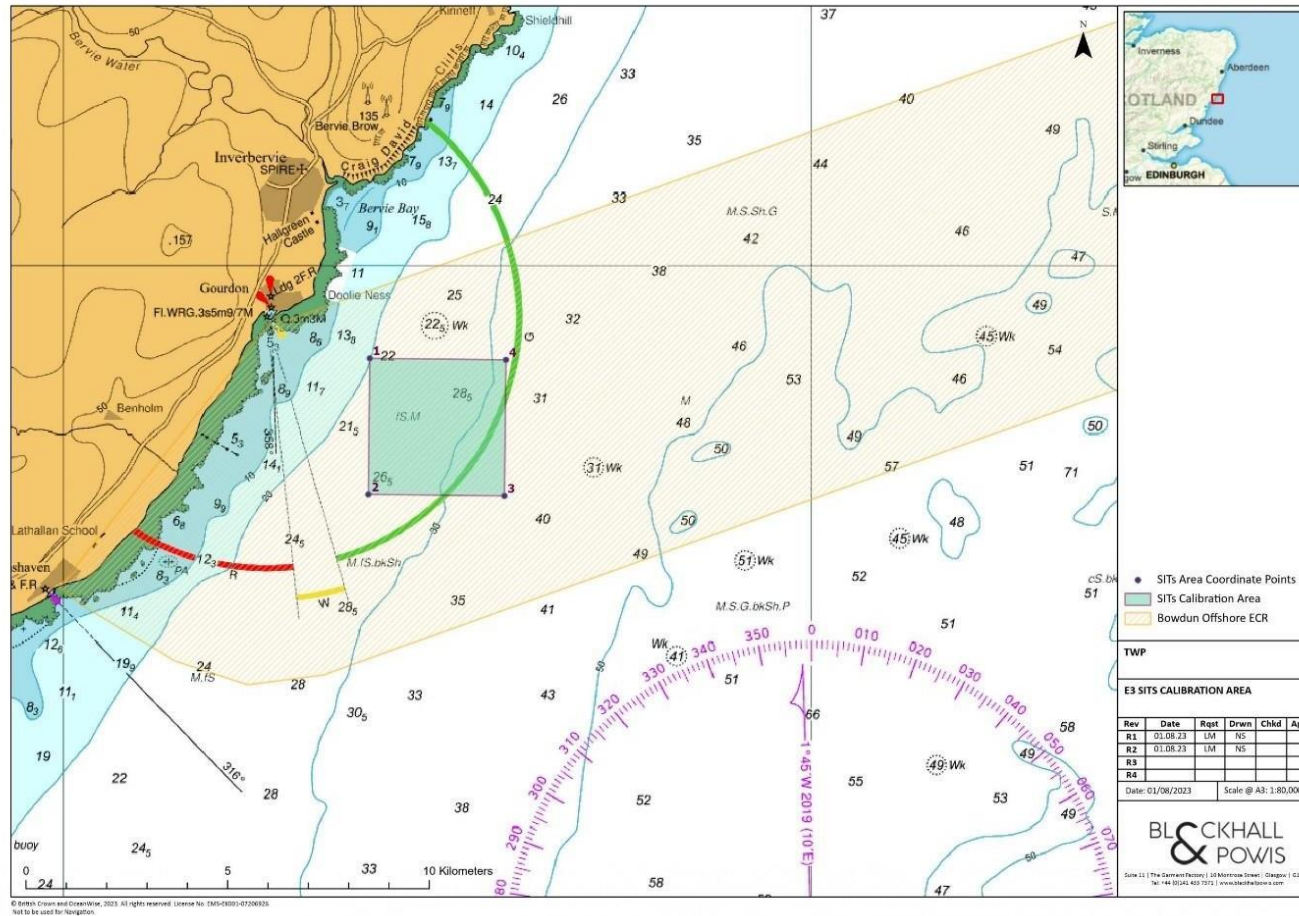


Figure 2: Calibration Test Area



TWP

THISTLE WIND
PARTNERS

Contact us

Capital Building
12/3 Andrew Square
EH2 2AF Edinburgh
Scotland, United Kingdom

contact@twp.scot

Follow us at: [@TWPscot](https://www.instagram.com/TWPscot)

