

TWP

**THISTLE WIND
PARTNERS**



Notice to Mariners

**Bowdun E3
04/04/24**

DSV Curtis Marshall

Overview

Benthic Survey - Array Area/Exported Cable Corridor

Thistle Wind Partners are developing the proposed Bowdun (E3) Offshore Wind Farm.

Please be advised that Ocean Ecology Ltd (OEL), on behalf of Thistle Wind Partners (TWP), is undertaking a benthic survey of the proposed Bowdun (E3) Offshore Wind Farm Array Area and Export Cable Corridor. The purpose of this Notice to Mariners (NtM) is to outline the working area for the survey vessel, as well as the scope of work. The survey will utilise the vessel DSV Curtis Marshall.

Schedule of Operations

Survey Dates:	12/04/24 - 10/05/24
Operation:	Benthic Survey
Vessel (s):	DSV Curtis Marshall

Survey Description

Ocean Ecology Ltd (OEL) will be undertaking a benthic characterisation survey inclusive of a drop-down camera assessment, seabed grabs and water sampling. The survey operations do not involve towed survey equipment. The works will be completed by personnel from OEL onboard the vessel DSV Curtis Marshall. Works will be carried out on a continuous basis, 24-hours per day, seven days a week.

General Safety Advice

The vessel will be restricted in their ability to maneuver and will display the appropriate lights and shapes prescribed by the International Regulations for Preventing Collisions at Sea. Other vessels are requested to provide a minimum clearance of 500 m from the survey vessel during marine operations and pass at a safe speed. Regular security messages will be issued on VHF Channel 16 and this Channel will be always monitored by the vessel. The vessel will also transmit regular Automatic Identification System (AIS) messages.

Vessel Details

The vessel that will carry out the survey activities is shown below.



Figure 1: DSV Curtis Marshall Vessel.

Contacts

DSV Curtis Marshall

IMO	235107219
CALL SIGN	SHWN3
VESSEL TELEPHONE NUMBER	+44 1642 843 050
VESSEL CONTACT EMAIL	info@bmarshallmarine.co.uk
ONSHORE CONTACT NUMBER	+44(0) 7969 559 716
ONSHORE CONTACT EMAIL	gary.robinson@ocean-ecology.com

FISHING LIASON OFFICERS (FLOs)

BLACKHALL & POWIS

TOMMY FINN

07787 503119

tommy.finn@blackhallpowis.com

MICHAEL SUTHERLAND

07928 484343

michael.sutherland@blackhallpowis.com

MAIN OFFICE

Blackhall & Powis
Suite 11
The Garment Factory
10 Montrose Street
Glasgow
G1 1RE

Area of Operations

Table 1: Tabulated Coordinates of Area of Operations (Array Area and Export Cable Corridor)

POINT	Easting	Northing	Longitude	Latitude
Array Area				
1	597279	6325304	1° 23.755' W	57° 03.652' N
2	610831	6318329	1° 10.539' W	56° 59.710' N
3	602094	6307833	1° 19.418' W	56° 54.176' N
4	593631	6309085	1° 27.724' W	56° 54.958' N
5	594665	6312921	1° 26.619' W	56° 57.012' N
6	591779	6313974	1° 29.442' W	56° 57.614' N
7	593826	6318819	1° 27.315' W	57° 00.201' N
8	598990	6319518	1° 22.200' W	57° 00.513' N
9	595339	6321500	1° 25.760' W	57° 01.626' N

Exported Cable Corridor				
1	543662	6298275	2° 17.074' W	56° 49.576' N
2	590909	6316156	1° 30.254' W	56° 58.801' N
3	593941	6314788	1° 27.292' W	56° 58.028' N
4	592574	6311756	1° 28.708' W	56° 56.410' N
5	544275	6293477	2° 16.522' W	56° 46.987' N
6	543245	6293334	2° 17.535' W	56° 46.915' N
7	542253	6293648	2° 18.506' W	56° 47.090' N
8	541071	6294342	2° 19.660' W	56° 47.470' N
9	540864	6294482	2° 19.862' W	56° 47.547' N
10	540671	6294641	2° 20.050' W	56° 47.634' N
11	543555	6298334	2° 17.179' W	56° 49.609' N

Figure 2: Benthic Survey Area: Bowdun (E3) Array Area

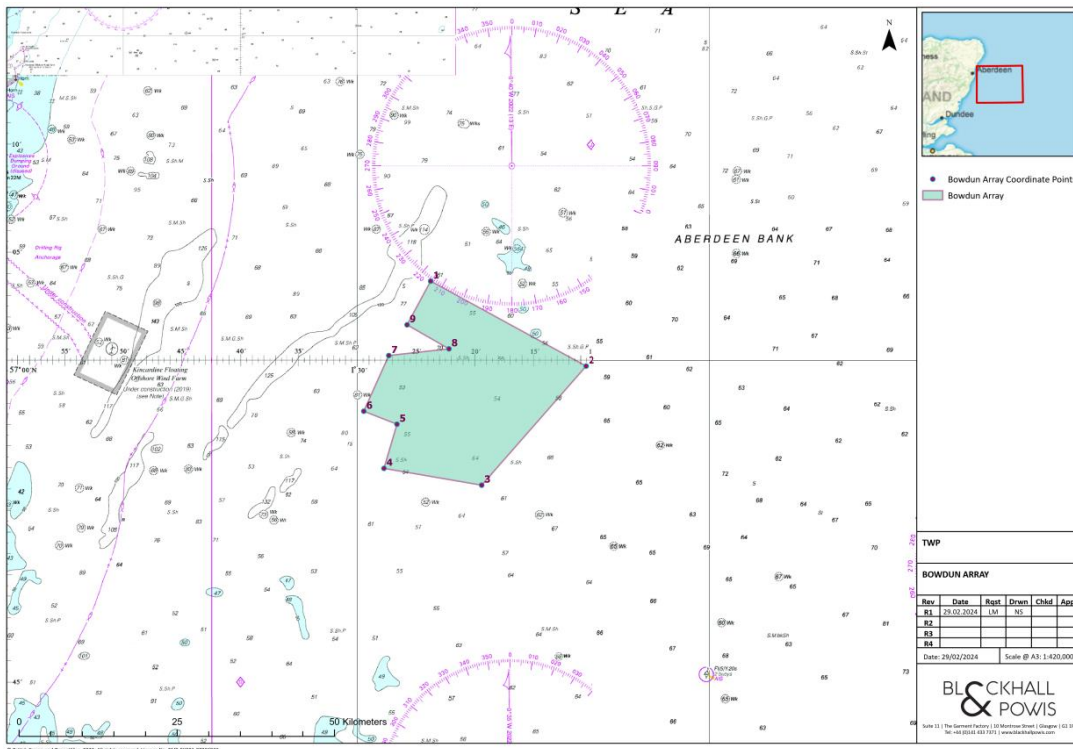
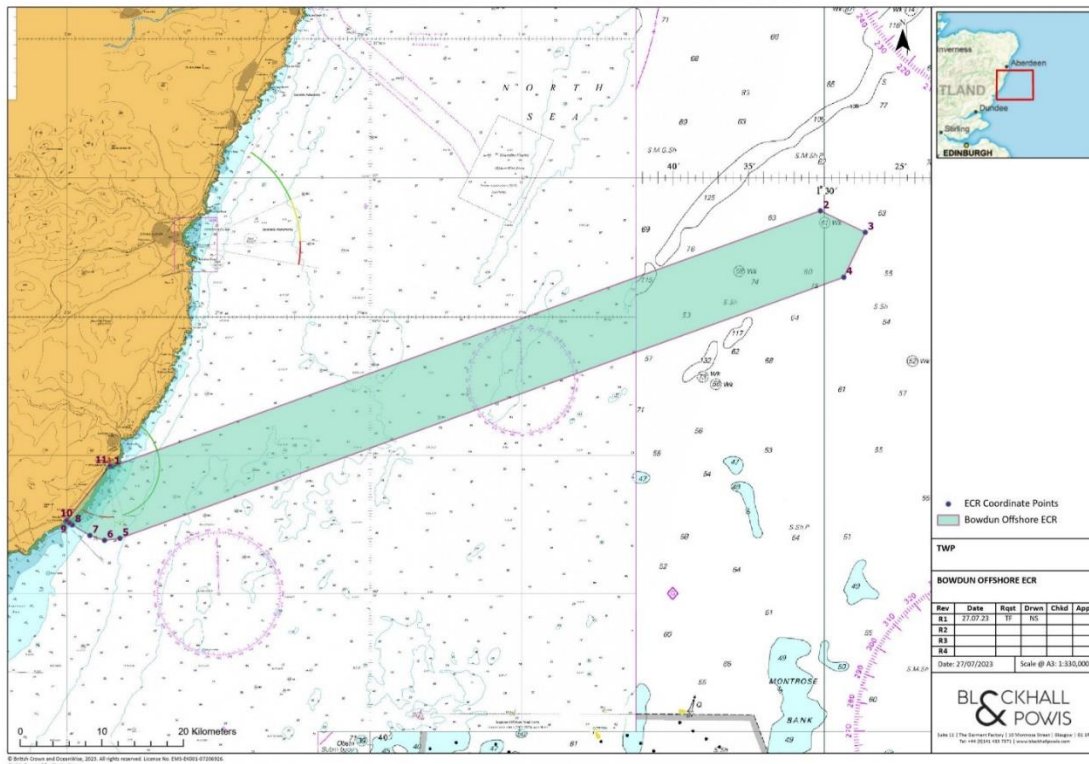


Figure 3: Benthic Survey Area: Bowdun (E3) Exported Cable Corridor





TWP

THISTLE WIND
PARTNERS

Contact us

Capital Building
12/3 Andrew Square
EH2 2AF Edinburgh
Scotland, United Kingdom

contact@twp.scot

Follow us at: [@TWPscot](https://www.instagram.com/TWPscot)

