

NOTICE TO MARINERS

Stromar Offshore Wind Farm Nearshore Water Sampling 2024

Introduction

Mariners are advised Stromar Offshore Wind Farm are undertaking nearshore water sampling from Friday 12 April 2024 in the Moray Firth near Fraserburgh, Scotland. The survey is expected to take between one and two days.

Area of Operations

Survey activities will be undertaken within the sampling area presented in Chart 1. Survey area coordinates are also provided in Chart 1.

Mariners are advised MaxSea and Olex plotter files can be provided by the Stromar Onshore Fishing Industry Representative on request.

Description of Activities

The survey vessel *Seren Las* will attend to a number of sampling positions within the survey area presented in Chart 1. At each sampling position a water sample at three depths will be acquired.

Safety Advice

It is requested that all vessels operating in proximity to the survey vessel keep a safe distance and pass at minimum speed/reduced wash when sampling is underway.

During survey a listening watch will be maintained on VHF Channel 16 or the appropriate channel when operating within a port authority area.


Vessel Contact Details

Vessel Skipper	
Name: Jack Findlater / Ashley Kirby	
Tel: +44 (0)7921 199091 / +44 (0)7773 031577	Email: jack.findlater@ocean-ecology.com / ashley.kirby@ocean-ecology.com
Survey Project Manager	
Name: Samuel Holmes	
Tel: +44 (0)7595 498823	Email: Samuel.holmes@ocean-ecology.com

Fisheries Liaison Contact Details

Onshore Fishing Industry Representative	
Name: Sophie Farenden	
Tel: +44 (0)7525 128344	Email: sophie.farenden@brownmay.com
Offshore Fisheries Liaison Officer	
Name: TBC	
Tel: TBC	Email: TBC

Vessel Information

Name:	Seren Las
Registered Flag:	United Kingdom
MMSI Number:	235087047
Call-sign:	MDAH2
Vessel Image:	
	
Length:	10 m
Draught:	1.5 m

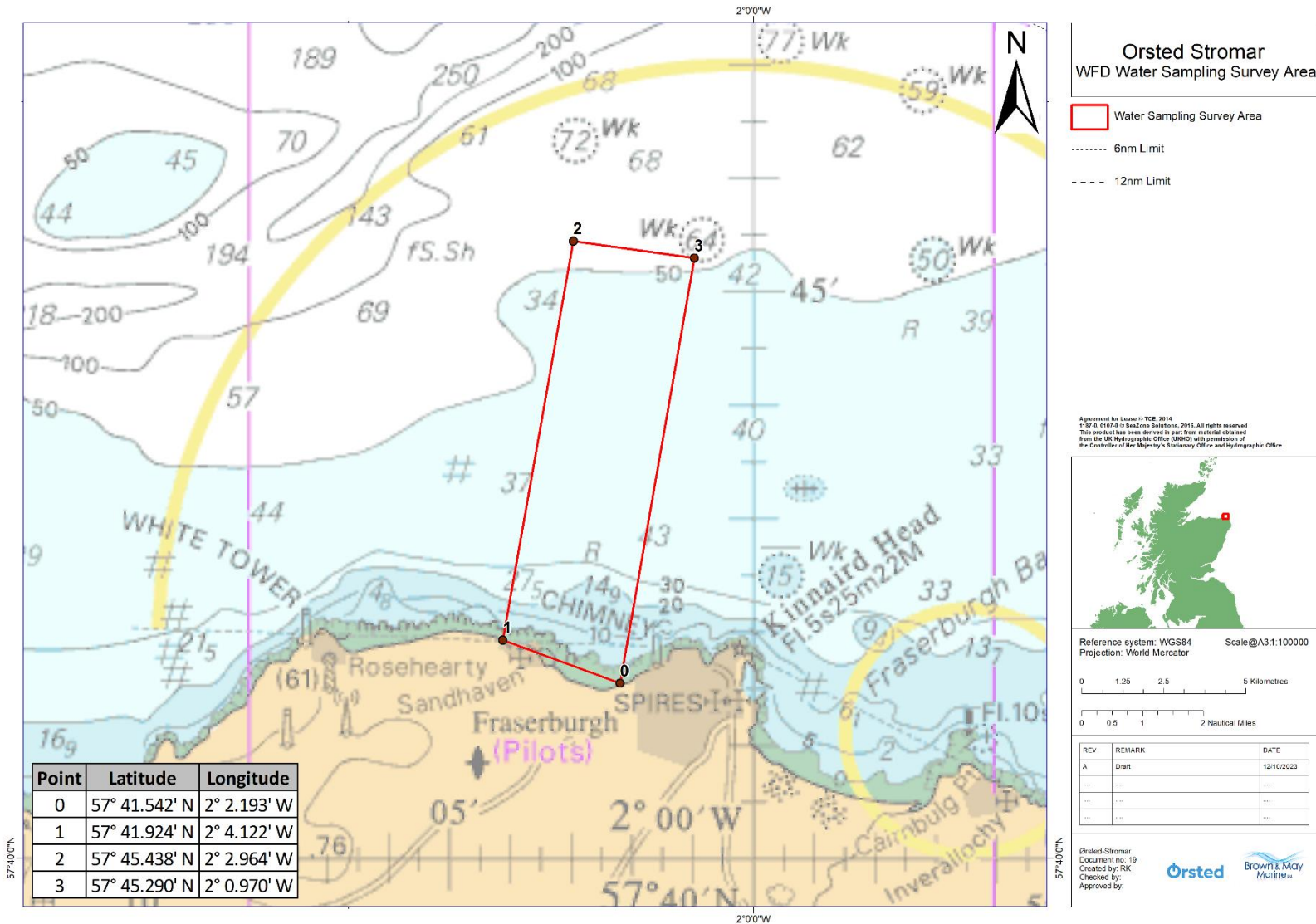


Chart 1. Stromar Offshore Wind Farm Nearshore Sampling Area

Stromar Offshore Wind Farm Limited
2nd Floor, 2 Lochrin Square, 96 Fountainbridge, Edinburgh, EH3 9QA